

November 11 (Sat.) - December 15 (Fri.), 2023

Commemorating the 100th Anniversary of
the Tokugawa Institute for the History of Forestry

Special Exhibition

Rule and Ritual:

The Shogun and the Owari Tokugawa Family

The Galleries at the Original Wing of The Tokugawa Art Museum

The Tokugawa Institute for the History of Forestry has been conducting research on the history of the Edo shogunate and the Owari domain. This exhibition focuses on the depth of the relationship between the shoguns and the Owari clan, providing a clear picture of the activities of the successive shoguns at Edo Castle and the daimyos of Nagoya Castle through historical materials and documents.



<An Illustrated Map of Edo Castle>
Edo period, 1766
The Tokugawa Institute for the History of Forestry

Commemorating the 100th Anniversary of
the Tokugawa Institute for the History of Forestry

Thematic Exhibition

Tokugawa Yoshichika and the Study of the Owari Family's Governance of the Kiso Mountain

Hōsa Bunko Galleries

This year marks the 100th anniversary of the establishment of the Tokugawa Institute of Forestry History by Tokugawa Yoshichika (1886-1976), the first director of the Tokugawa Art Museum and the 19th head of the Tokugawa family. Yoshichika was particularly interested in researching the region of the Kiso Mountains, which were historically owned and managed by the Owari clan. This exhibition traces the course of Yoshichika's research on the Kiso Mountains and presents the many historical materials that he collected.



<Yoshichika reading ancient documents>
Showa period, 1935
Taken by Mr. King
The Tokugawa Institute for
the History of Forestry



◀ The Tokugawa Institute for the History of Forestry

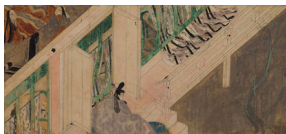
The Tokugawa Institute for the History of Forestry (Tokugawa Rinseishi Kenkyūjo) is a sister institution of the Tokugawa Art Museum. Both are part of the Tokugawa Reimeikai Public Interest Incorporated Foundation.

*In any exhibition, the exhibits may be changed due to various reasons without notice. Thank you for your understanding.

SPECIAL EXHIBITS AT THE MASTERPIECES COLLECTION GALLERY 5
November 18 (Sat.) - November 26 (Sun.), 2023

National Treasure Two Scenes of *The Tale of Genji Illustrated Scrolls*

The National Treasure *Tale of Genji Illustrated Scrolls* are not only the oldest surviving text version, they are also the oldest surviving illustrated edition of the tale, which has long time been beloved by so many people. This year, "Takekawa (Bamboo River) I" and "Azumaya (The Eastern Cottage) II" will be exhibited.



National Treasure
<Chapter Takekawa I>
The Tale of Genji Illustrated Scrolls
Heian period, 12th c.
The Tokugawa Art Museum



National Treasure
<Chapter Azumaya II>
The Tale of Genji Illustrated Scrolls
Heian period, 12th c.
The Tokugawa Art Museum

FEATURE EXHIBIT

MASTERPIECES COLLECTION GALLERY 1 Tokugawa Ieyasu

Personal effects of Tokugawa Ieyasu (1542-1616) now held by the Tokugawa Art Museum total approximately 300 objects from a wide variety of categories, including arms and armor, tea ceremony utensils, incense ceremony utensils, writing implements, garments, foreign-made articles, consumables, paintings, and calligraphies. Selection of these bequest will be exhibited in the Gallery 1 throughout the year 2023 **until December 15 (Fri.)**.



Important Cultural Property
<Katana Long Sword, Inscription: certified as Nagayoshi's work, etc.>
Nanbokuchō period, 14th c.
The Tokugawa Art Museum
(exhibited from June 20 to September 24, 2023)

Attention

The Tokugawa Art Museum is closed from December 16, 2023 through January 3, 2024.



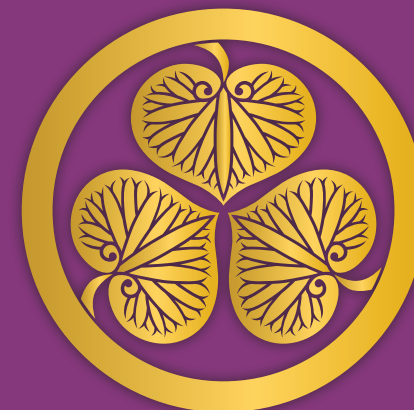
© The Tokugawa Art Museum
1017 Tokugawa-cho, Higashi-ku,
Nagoya, 461-0023
TEL: 052-935-6262 / FAX: 052-935-6261



2023
April - December

Exhibition Schedule

THE TOKUGAWA ART MUSEUM
HŌSA LIBRARY CITY of NAGOYA



April 15 (Sat.) - May 28 (Sun.), 2023

Special Exhibition

Magnificent Maki-e: Tales of Urushi and Gold over a Thousand Years

The Galleries at the Original Wing of The Tokugawa Art Museum

Maki-e is the art of painting with *urushi* (lacquer) and sprinkling gold or silver powders onto it to produce pictorial designs. This exhibition traces the history of *maki-e* over a thousand years and the legacy of beauty created by the Japanese people, introducing a selection of *maki-e* masterpieces from the Heian period to contemporary works by Living National Treasures.



National Treasure
<Writing Box with Pontoon Bridge in Maki-e>
Attributed to Hon'ami Kōetsu
Edo period, 17th c.
Tokyo National Museum
Image: TNM Image Archives
*On View from April 15 to May 7

Thematic Exhibition

The World of Noh Drama: Gods, Men, Women, Madness, and Demons

Hōsa Bunko Galleries

Noh is a form of traditional Japanese theater with a 600-year history. This exhibition presents masks and costumes representing the five categories of Noh plays: Gods, Men, Women, Mad-Women, and Demons.



<Noh Mask, Ko-omote (Girl)>
Traditionally attributed to Zekan Yoshimitsu
Momoyama-Edo period, 16th-17th c.
The Tokugawa Art Museum

FEATURE EXHIBIT AT MASTERPIECES COLLECTION GALLERY 5

National Treasure The Hatsune Furnishings

Princess Chiyo (1637-1698), the eldest daughter of the 3rd Tokugawa shogun Iemitsu, received this bridal trousseau in 1639, when she married Mitsutomo, the 2nd lord of the Owari clan. The motif on the matching ensemble comes from a poem in "The First Warbler," chapter 23 of *The Tale of Genji*. The poetic design is elegantly embedded in the lacquered furnishings with scattered letters and pictorial motifs.

Designated a National Treasure, the *Hatsune* Trousseau represents the finest example of the decorative lacquer technique of *maki-e* (sprinkled metal decoration) in Japan as well as the power of the Tokugawa shogunate. Selection of the *Hatsune* Furnishings will be exhibited in the Gallery 5 throughout the year.



**Sho-dana* is a shelved-stand on which books, handscrolls or stationery items are usually placed.

Three *Sho-dana* Shelves from the National Treasure "Hatsune and Kochō Furnishings" on display for the first time since completion of 6-year restoration project begun in 2017

From March 28 to May 23, 2023

From among Princess Chiyo's marriage trousseau, three *Sho-dana** are specially showcased during this period. These *Sho-dana* had sustained considerable damage from aging, such as visible cracks, staining, and degradation of the surface finish. To address these concerns, the pieces underwent extensive repair and restoration over the course of six years, from 2017 to 2022, with the support of the Japanese national government, the Aichi prefectural government, as well as the Sumitomo Foundation.

This is the first time the three shelves are displayed for the public after the completion of the repair and restoration work.

<Origami Certificate of
Evaluation for
Katana Long Sword>
By Hon'ami Kōshitsu
Edo period, 1621
The Tokugawa Art Museum



Special Exhibition

The Aesthetics of Edo Attire

The Galleries at the Original Wing of The Tokugawa Art Museum

This exhibition presents the aesthetics of the samurai class of the Edo period—from the clothing and personal accessories that adorned the physical bodies of the lords and ladies with dignity and beauty in a manner worthy of their high status, to the swords and sword fittings they carried and the cosmetic accessories that epitomized beauty itself.



<Sword Mountings for Swords>
Edo period, 1854
The Tokugawa Art Museum

Thematic Exhibition

The Connoisseur's Eye: Art Appraisal in the Edo Period

Hōsa Bunko Galleries

In the Edo period, formal appraisals were conducted to evaluate the authenticity and value of works of art in various genres, such as swords, calligraphy, paintings, and more. This exhibition will explore the nature of the appraisal process through a variety of appraised artworks and their accompanying documentation, including written certificates of appraisal, authentication slips, and box inscriptions.

July 23 (Sun.) - September 18 (Mon.), 2023

Summer Special Exhibition

Tokugawa Ieyasu: The Path to Supreme Rule

Hōsa Bunko Galleries and

The Galleries at the Original Wing of The Tokugawa Art Museum

This exhibition traces the course of the tumultuous life of Tokugawa Ieyasu, the leader, through historical documents and other sources, while also unraveling the story of Ieyasu, the man—his character, his military prowess, his politics and scholarship, his connection with the cultural arts, and more—through the objects in his posthumous bequest known as the Sunpu Owakemono.



<Gusoku Helmet and Armor, rising-sun design>
Momoyama-Edo period, 16th-17th c.
Worn by Tokugawa Ieyasu
The Tokugawa Art Museum



Important Cultural Property
<Haori Jacket, scattered aoi-leaf design>
Momoyama-Edo period, 16th-17th c.
Worn by Tokugawa Ieyasu
The Tokugawa Art Museum

September 24 (Sun.) - November 5 (Sun.), 2023

Autumn Special Exhibition

In Praise of Humanity: Genre Paintings of the Edo Period

Hōsa Bunko Galleries and

The Galleries at the Original Wing of The Tokugawa Art Museum

As the upheavals of the Warring States period came to an end and an era of peace took hold, the Edo period witnessed a profusion of genre paintings reflecting the spirit of worldly pleasures found in theatrical performances, pleasure quarters, and festival scenes set against the backdrops of the cities of Kyoto and Edo. These Edo-era genre paintings celebrate peace and though they sometimes convey a sense of disenchantment with the world, their focus is fixed on people living the realities of their time and as such they retain a universal kind of appeal still today. This exhibition presents numerous exceptional works of genre painting, which flourished during the Edo period, and invites us into their world.



National Treasure
<Genre Scene>
(known as "Hikone Byōbu")
Edo period, 17th c.
Hikone Castle Museum



Important Cultural Property
<Pleasures and Amusements>
(known as "Sō'ōji Byōbu")
Edo period, 17th c.
The Tokugawa Art Museum