



徳川美術館
THE TOKUGAWA ART MUSEUM

90th
ANNIVERSARY
since 1935

2025 - 2026
April March

Exhibition Schedule

THE TOKUGAWA ART MUSEUM & HŌSA LIBRARY, CITY of NAGOYA

※
Advance online ticket purchases are required
for the following days (Sat., Sun. & National Holiday):
June 14, 15, 21, 22, 28, 29.
July 5, 6, 12, 13, 19, 20, 21, 26, 27.

※
In any exhibition,
the exhibits may be changed
due to various reasons without notice.
Thank you for your understanding.
※

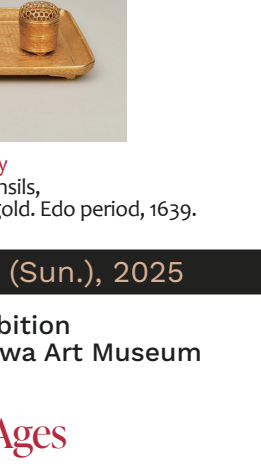
April 12 (Sat.) - June 8 (Sun.), 2025

Special Commemorative Exhibition
for the 90th Anniversary of the Tokugawa Art Museum

National Treasure: The *Hatsune* Furnishings

The Original Wing Galleries of The Tokugawa Art Museum

Among the more than ten thousand items in the Tokugawa Art Museum collection, the National Treasure Hatsune Furnishings are the pride of the world and shine brightly amongst many other treasures housed in this museum. The National Treasure Hatsune Furnishings were made in 1639 as the wedding trousseau for Chiyohime, the eldest daughter of the third Shogun Iemitsu. Chiyohime married the second head of the Owari Tokugawa clan, Mitsutomo. Despite the possibility of being entirely lost, a total of seventy pieces have been handed down as a single set and showcase the level of excellence of Edo period lacquer work, *maki-e*. The National Treasure *Hatsune* Furnishings, the intricate and luxurious wedding trousseau of a feudal lord's bride, will be exhibited in its entirety.



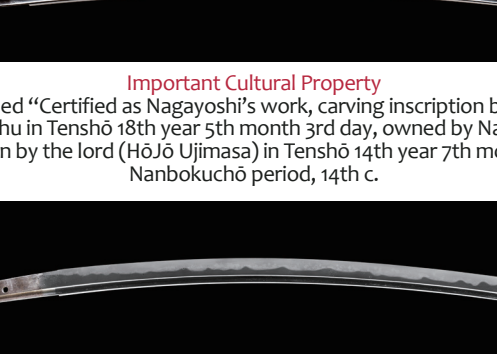
National Treasure
Writing Table and Inkstone Box,
Hatsune motif, *maki-e* lacquer.
Edo period, 1639.

Thematic Exhibition

The Resplendent Life of Chiyohime: Princess of the Third Tokugawa Shogun

The Hōsa Bunko Galleries

Born the long-awaited child of the third shogun Tokugawa Iemitsu at Edo Castle, Lady Chiyohime (1637-1698) was a shogunal princess by birth. At the age of just 2 years 6 months, she was betrothed to Tokugawa Mitsutomo, the second Lord of Owari, in order to ensure that her father would have a successor, as he was initially not blessed with any sons of his own. But when her two brothers, Ietsuna and Tsunayoshi, were born into the shogunal line, she became elder sister to two successive shoguns. The power that this position brought her resulted in a truly resplendent life. With this exhibition, we look back on the life of Princess Chiyohime, who served as a bridge between the shogunal and daimyo families and laid the foundation for the future prosperity of the Owari Tokugawa family.



Important Cultural Property
Tray and Incense Scenting Utensils,
scattered *aoi* crest and landscape design, solid gold. Edo period, 1639.

June 14 (Sat.) - September 7 (Sun.), 2025

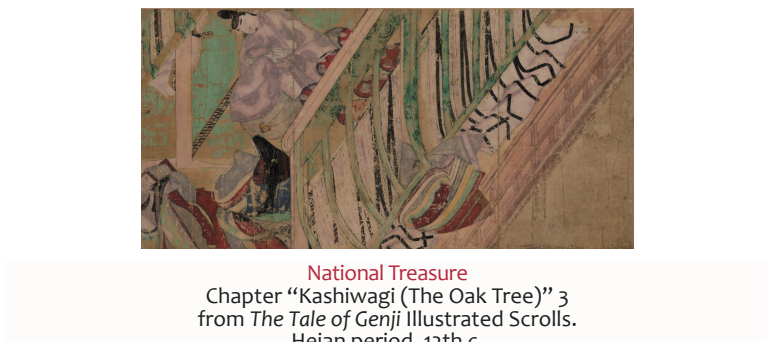
Special Commemorative Summer Exhibition
for the 90th Anniversary of the Tokugawa Art Museum
and the Hōsa Bunko Library

Celebrated Swords Across the Ages

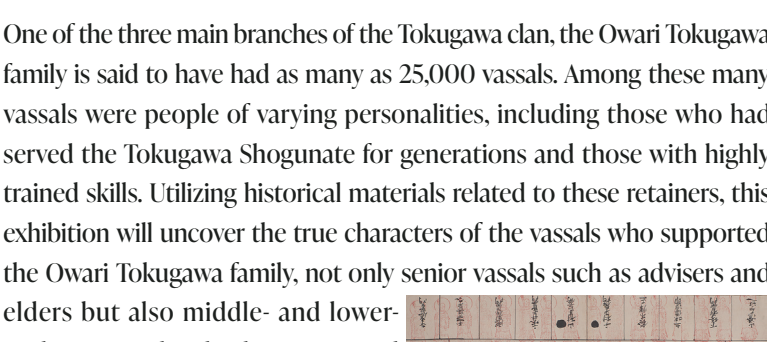
The Original Wing Galleries of The Tokugawa Art Museum
and the Hōsa Bunko Galleries

There are many famous swords handed down to the feudal lords of the Owari Tokugawa family with tales of glory in battle, such as having passed through the hands of several rulers and survived wars, and many with auspicious stories, such as having been presented as gifts for military achievements or celebrations. The value and importance of each sword was enhanced by each item's history.

This exhibition will display renowned swords used by famous warlords and feudal lords throughout history. Presenting swords in the Tokugawa Art Museum's collection that are National Treasures, Important Cultural Properties, as well as famed swords, this exhibition will introduce the profound appeal of swords from both the perspectives of their fascinating historical background and the beauty of the swords themselves.



Important Cultural Property
Katana, signed "Certified as Nagayoshi's work, carving inscription by Kunihiro of Hyūga in Kyushu in Tenshō 18th year 5th month 3rd day, owned by Nagao Shingorō Akinaga, given by the lord (Hōjō Ujimasa) in Tenshō 14th year 7th month 21st day".
Nanbokucho period, 14th c.



Important Cultural Property
Katana, signed "Work by Kunihiro of Kyushu Hyūga, ordered by Taira-no-Akinaga in Tenshō 18th year 2nd month auspicious day", known as Yamanba-giri Kunihiro.
<Ashikaga Citizens Cultural Foundation>

September 13 (Sat.) - November 9 (Sun.), 2025

Special Commemorative Autumn Exhibition
for the 90th Anniversary of the Tokugawa Art Museum
and the Hōsa Bunko Library

Conserving the Legacy: Treasures of the Owari Tokugawa Family

The Original Wing Galleries of The Tokugawa Art Museum
and the Hōsa Bunko Galleries

In November 2025, the Tokugawa Art Museum and Hōsa Bunko will celebrate their 90th anniversary. The Tokugawa Art Museum opened in Nagoya in 1935, and the Hōsa Bunko was established at the residence of the Owari Tokugawa family in Mejiro, Tokyo, before being transferred to Nagoya City in 1950. Together, they continue to actively preserve the collections of the Owari Tokugawa, the senior of the three cadet branches of the Tokugawa family.

This exhibition presents the full picture of the collections of the Tokugawa Art Museum and the Hōsa Bunko through their many masterpieces, including several designated Important Cultural Properties, along with related materials that tell the story of the museum's 90-year history through the Shōwa period to today.



Important Cultural Property
Haori Jacket,
scattered *aoi*-leaf design, stitch-resist tie-dyeing,
plain-weave silk.
Momoyama-Edo period, 16th-17th c.
Worn by Tokugawa Ieyasu.

November 15 (Sat.) - December 7 (Sun.), 2025

Special Commemorative Exhibition
for the 90th Anniversary of the Tokugawa Art Museum

National Treasure: *The Tale of Genji* Illustrated Scrolls

The Original Wing Galleries of The Tokugawa Art Museum

The National Treasure *Tale of Genji* illustrated scrolls form one of Japan's most famous and most representative illustrated manuscripts. Together, the extant fragments represent the oldest surviving examples of paintings of the courtly classic *The Tale of Genji* beautifully depict the world of the tale and the psychology of the characters in a tranquil style. The accompanying text, written in elegant calligraphy on beautifully decorated papers, conveys the rich atmosphere of an era close to the time the original story was written, and continues to fascinate viewers even today.

To mark this celebratory occasion of the museum's 90th anniversary, all the surviving fragments of this work will be exhibited together in Nagoya for the first time in 10 years.



National Treasure
Chapter "Kashiwagi (The Oak Tree)" 3
from *The Tale of Genji* Illustrated Scrolls.
Heian period, 12th c.

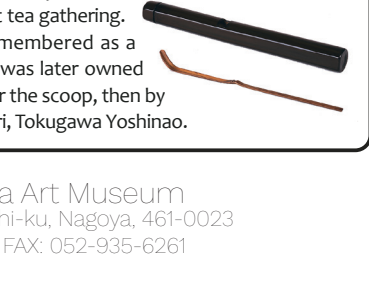
November 15 (Sat.) - December 14 (Sun.), 2025

Thematic Exhibition
in collaboration with the Tokugawa Institute for
the History of Forestry

The Owari Tokugawa Vassals

The Hōsa Bunko Galleries

One of the three main branches of the Tokugawa clan, the Owari Tokugawa family is said to have had as many as 25,000 vassals. Among these many vassals were people of varying personalities, including those who had served the Tokugawa Shogunate for generations and those with highly trained skills. Utilizing historical materials related to these retainers, this exhibition will uncover the true characters of the vassals who supported the Owari Tokugawa family, not only senior vassals such as advisers and elders but also middle- and lower-ranking vassals who have received little attention until now.



Sugoroku Game based on
Man's Success Story in the Owari Clan.
Edo period, 19th c.

◀ The Tokugawa Institute for the History of Forestry ▶

The Tokugawa Institute for the History of Forestry (Tokugawa Rinseishi Kenkyūjo) is a sister institution of the Tokugawa Art Museum. Both are part of the Tokugawa Reimeikai Public Interest Incorporated Foundation.

Attention The Tokugawa Art Museum is closed
from December 15, 2025 through January 3, 2026.

January 4 (Sun.) - February 1 (Sun.), 2026

Thematic Exhibition

Kami: The Myriad Deities of Japan

The Hōsa Bunko Galleries

Throughout Japan, various deities known as *kami* are enshrined as protectors of the land and the people who inhabit it. In ancient times, people formed communities and prayed to these *kami*, offering thanks for the blessings that they brought. From these original ancestral deities, new tribes of deities emerged, and with them groups of people formed to dedicate their prayers to specific kami endowed with their own specialties. This exhibition explores the relationship between the Japanese people and the *kami*, focusing on the places where these deities are enshrined, the people who worship them, and the various festivals that are held in their honor.

Festival of Nikko Tōshōgū Shrine, handscroll.
Edo period, 19th c.

February 7 (Sat.) - April 5 (Sun.), 2026

Special Exhibition

Hina Doll Festival of the Owari Tokugawa Family 2025

The Original Wing Galleries of The Tokugawa Art Museum

Heralding the arrival of spring, the Tokugawa Art Museum will present an exhibition of *Hina* Doll Festival decorations handed down through the Owari Tokugawa family from the Edo period to modern times to celebrate the *Hina* Doll Festival. The *hina* dolls dressed in ceremonial court attire owned by Edo-period princesses and the intricate doll accessories, which are miniature wedding furnishings, are works of elegance that demonstrate the status of the feudal lord's family. Please enjoy the items filled with the joy and gaiety of spring, including a gorgeous display of dolls from the wives of three generations of the Owari Tokugawa family from the Meiji to Shōwa periods.

Noble Retainer (*yūsoku-bina*).
Edo period, 19th c.

Kanazawa-Bunko Museum and Hōsa Library Joint
Thematic Exhibition

The Kanazawa Bunko Manuscripts: The Story of Wandering Books

The Hōsa Bunko Galleries

Founded by the 13th-century samurai warrior Hōjō Sanetoki, Kanazawa Bunko is the oldest "Buke-bunko" (samurai-family library), and is renowned as a treasure house of classical manuscripts. After the fall of the Kamakura Shogunate, Tokugawa Ieyasu actively worked to reassemble the library's collections, which had been scattered. A portion of the collection, which became known as the "Suruga o-yuzuribon," was passed down to his son, Yoshinao, and is now stored in the Hōsa Bunko. This exhibition presents the rich history of the "Kanazawa Bunko manuscripts," through the collaboration of two institutions dedicated to preserving those treasures.

National Treasure
Portrait of Hōjō Sanetoki.
Kamakura period, 13th-14th c.
<Shōmyō-ji Temple, Kanagawa>

Special Exhibits at the Masterpieces Collection Room 2
February 21 (Sat.) - March 1 (Sun.), 2026
Tea Scoop, named Namida ("Tears")

It is said that Sen-no-Rikyū (1522-1591), in his last days, carved this bamboo tea scoop and used it in his last tea gathering. March 28, the day of Rikyū's death, is remembered as a memorial day called "Rikyū-ki." The scoop was later owned by Furuta Oribe who made the outer case for the scoop, then by Tokugawa Ieyasu and by the 1st lord of Owari, Tokugawa Yoshinao.

© The Tokugawa Art Museum
1017 Tokugawa-cho, Higashi-ku, Nagoya, 461-0023
TEL: 052-935-6262 / FAX: 052-935-6261